

COMPARATIVE STUDIES

Nickel RAPID RUN™
Cobalt RAPID RUN™



RESINS

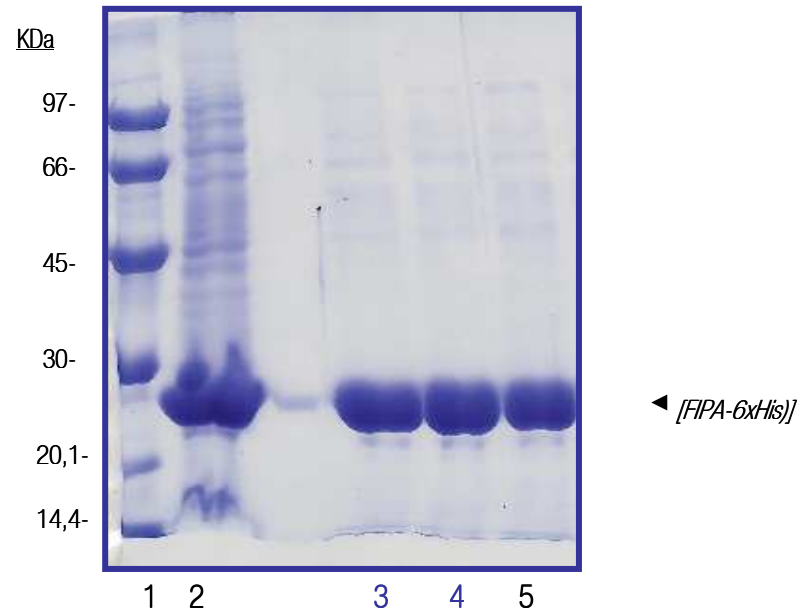
Experiment:

Unpurified extract containing Fuculose 1-aldolase (6xHis) was tested under the same conditions with different **NICKEL RAPID RUN** beads. The SDS-PAGE shows the eluted fraction in all the resins.

Comparison:

- 1.- Low Molecular Weight markers (LMW)
- 2.- F1PA (6x His) extract
- 3.- **ABT**: Nickel Rapid Run™ (Cat N°. 6NiRR) (Batch 1)
- 4.- **ABT**: Nickel Rapid Run™ (Cat N°. 6NiRR) (Batch 2)
- 5.-Competitor A.

PURIFICATION OF <i>[F1PA-6xHis]</i> (mg tagged protein /ml gel)	
3	5,54
4	5,13
5	5,02



RESINS

Experiment:

Unpurified extract containing Fuculose 1-aldolase (6xHis) was tested under the same conditions with different COBALT Charged chelating beads. The SDS-PAGE shows the eluted fraction in all the resins.

Comparison:

- 1.- Low Molecular Weight markers (LMW)
- 2.- F1PA (6x His) extract
- 3.- [ABT](#): Cobalt Rapid Run™ (Cat N°. 6CoRR)
- 4.- Competitor B.
- 5.- Competitor C.

PURIFICATION OF [F1PA-6xHis] (mg tagged protein /ml gel)	
3	6,22
4	5,31
5	4,64

